

# Sasha Laika

## *Interior Design Portfolio*

www.sashalaika.com  
laikainteriors@gmail.com  
+44 (0)7403 964688



## *Contents*

Lewin road	2
One bedroom apartment	9
Other work	13

# *Lewin road*





# CONTEMPORARY PROVENCE

WELCOMING  
FUNCTIONAL  
INTIMATE  
WARM

## Streatham. Victorian home Refurbishment

*Project overview:*

*Terraced Victorian 4 bedroom home in London.*

*Early 40s professional couple with three children of 9 years old and under:*

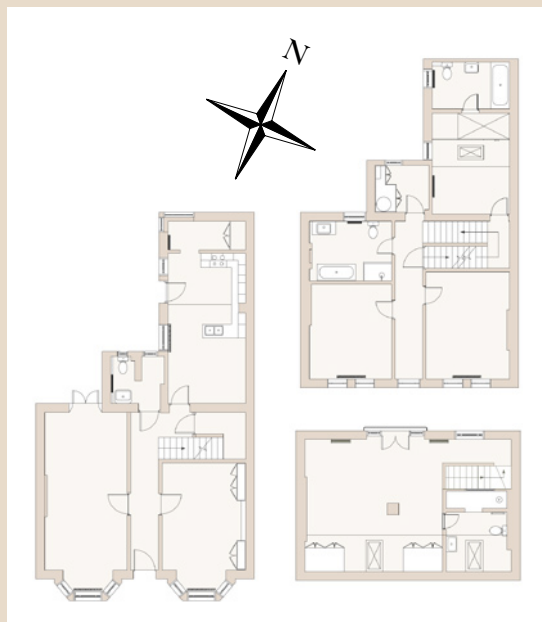
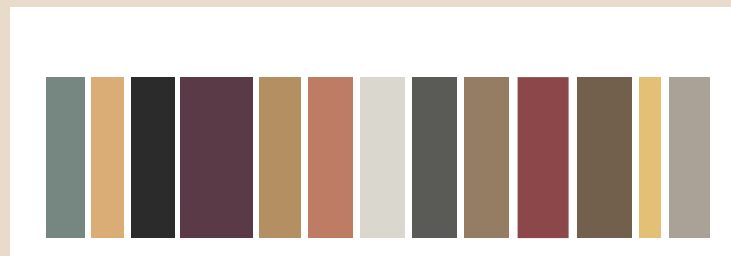
- Managing director of a music label in the UK
- Liver transplant coordinator

*The brief is to reorganise the ground floor layout moving the kitchen/ dining area to one of the front reception rooms. The original kitchen will be turned into a TV/play room that can also serve as a guest room. The ground floor WC layout will be improved as well.*

*It would be particularly important to create beautiful layers of glowing warm light as well as the feel of a traditional French country home balanced out by modern finishes.*

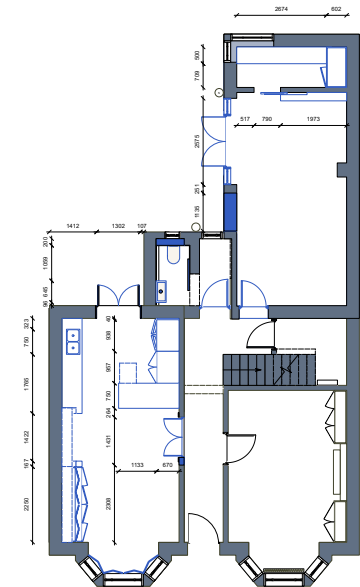
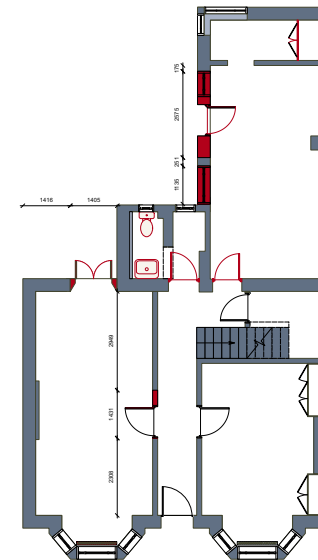
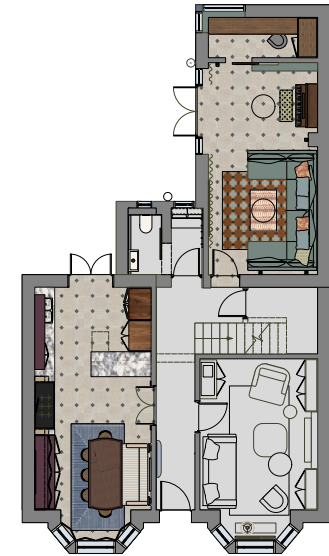


### COLOUR PALLETTE



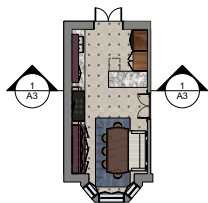


# Kitchen. Floor plans & Sample boards





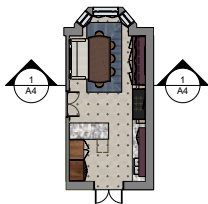
# Kitchen Elevations



1 Kitchen Elevation - Garden side  
Scale: 1:20



1 Kitchen Elevation - Entrance side  
Scale: 1:20

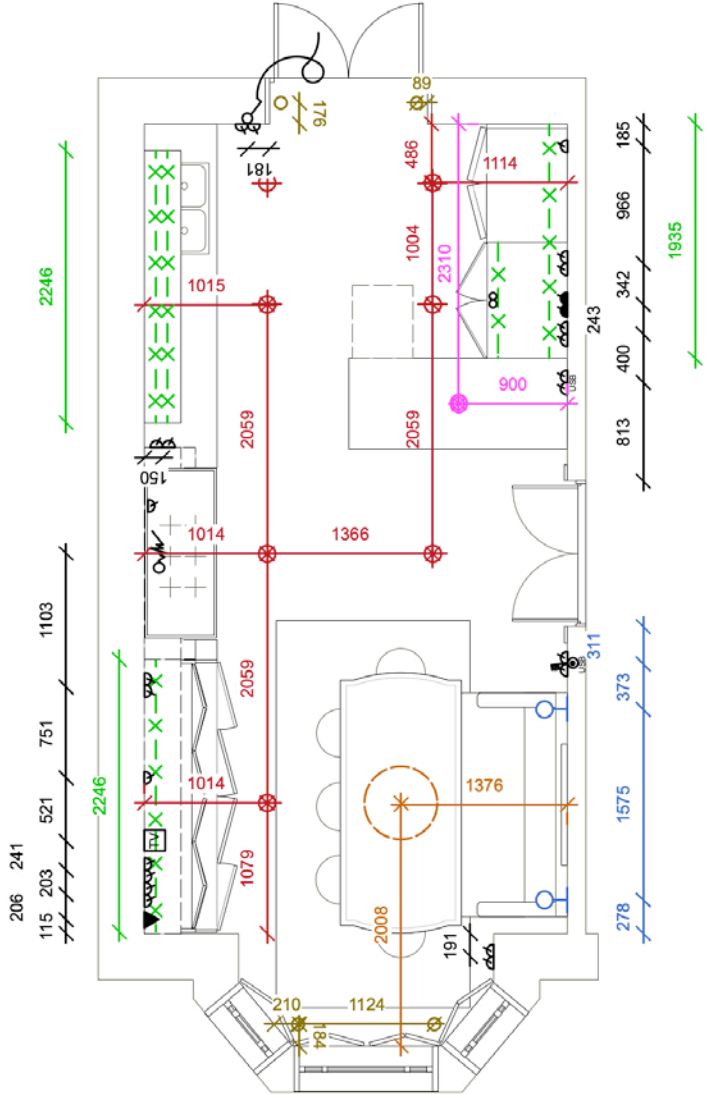
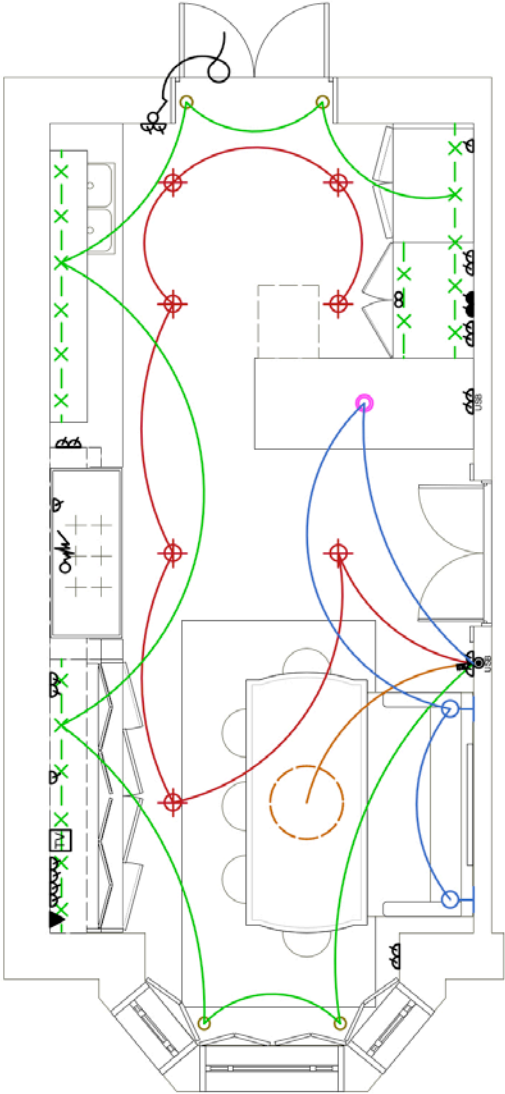


1 Kitchen Elevation - Bay window side  
Scale: 1:20



1 Kitchen Elevation - Cooker side  
Scale: 1:20

# Lighting plan

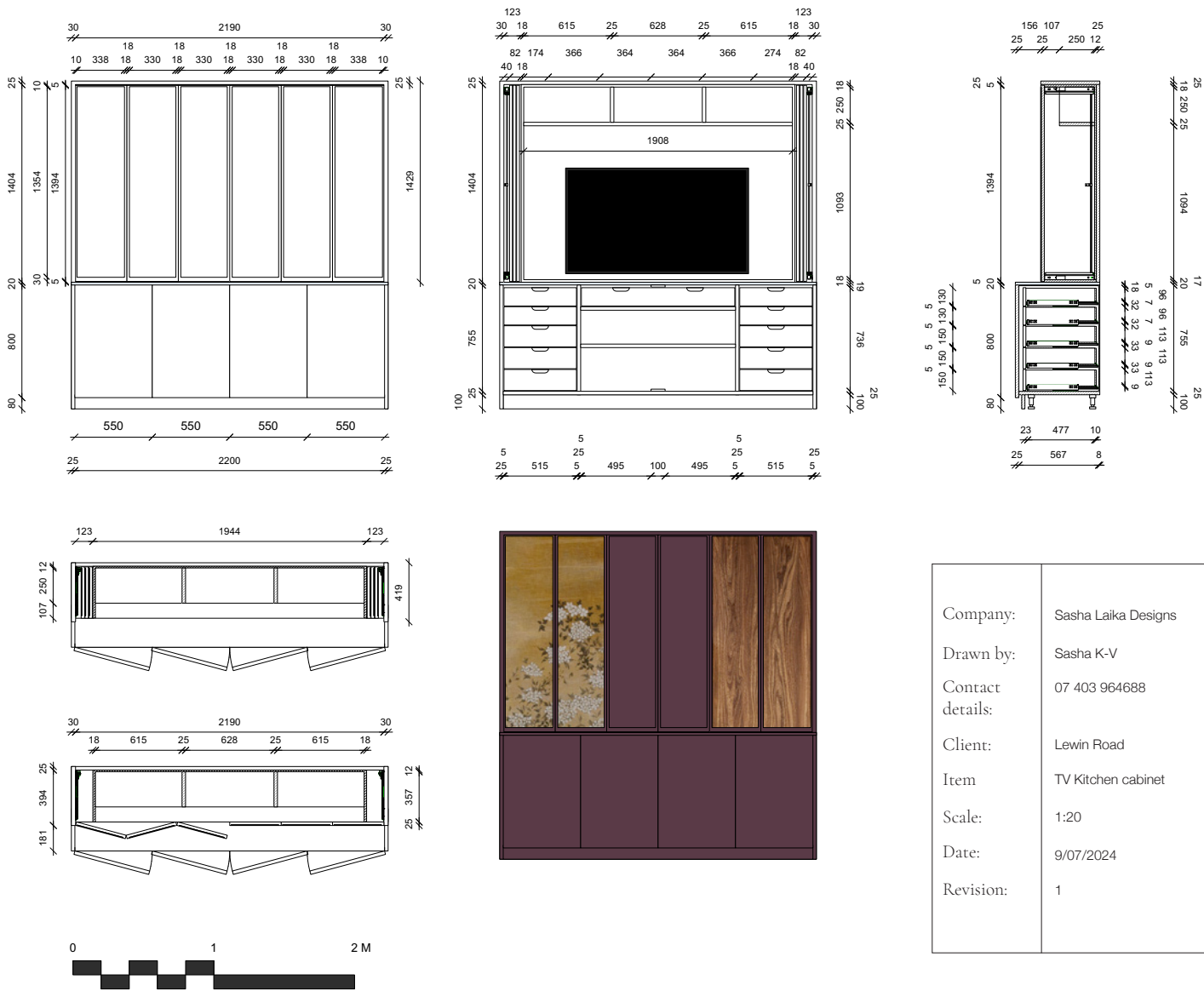


	x1 Four gang one way switch
	x1 One gang one way switch
	x7 Downlighters
	x1 Pendant fitting
	x1 Chandelier
	x2 Wall lights
	x4 Floor recessed lights
	x1 Cupboard switch
	x5 LED strips
	x8 Double sockets
	x2 USB sockets
	x2 Fused sockets
	x3 Single sockets
	x1 Data
	x1 TV point
	x1 Extractor fan



# Bespoke joinery

## TV Sideboard, detailed drawing



Company:	Sasha Laika Designs
Drawn by:	Sasha K-V
Contact details:	07 403 964688
Client:	Lewin Road
Item	TV Kitchen cabinet
Scale:	1:20
Date:	9/07/2024
Revision:	1

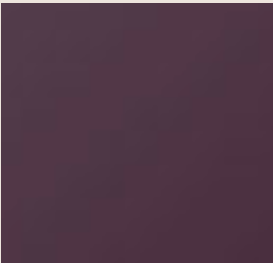
Samples



Artwork printed on canvas



Walnut veneer



Eggshell Paint by Neptune in colour Clove



Furniture Knob, Kilburn by Corston

# 3D Rendering







# One bedroom apartment

# ITALIAN VILLA INSPIRED

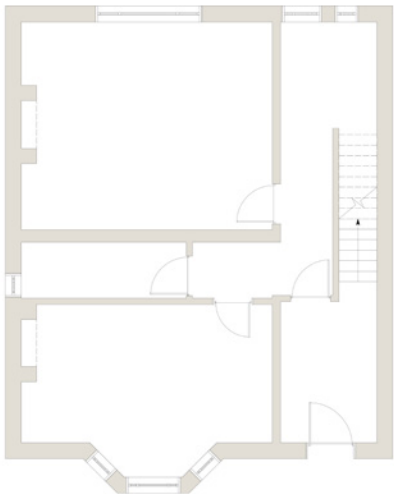
SOPHISTICATED  
ARTISTIC  
TACTILE  
INFORMAL

## One bedroom apartment. Victorian home Refurbishment

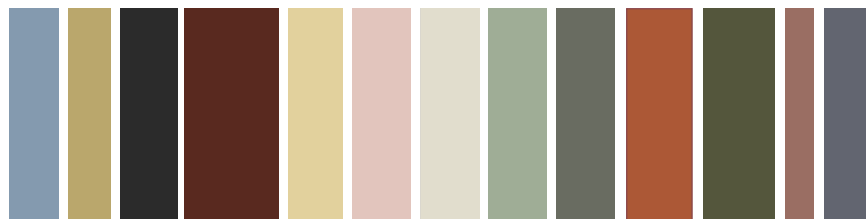
*Project overview:*

*London based second home  
for coming to London for work  
meetings and culture.*

*Rethink the apartment so  
it doesn't feel like a typical  
Victorian terrace house. Create  
a space that feels luxurious in its  
comfort and elegance yet is easy  
going. Practical for daily life with  
the looks of a holiday escape.  
Timeless interior with layers of  
history balanced out by modern  
finishes. Welcoming and original.*

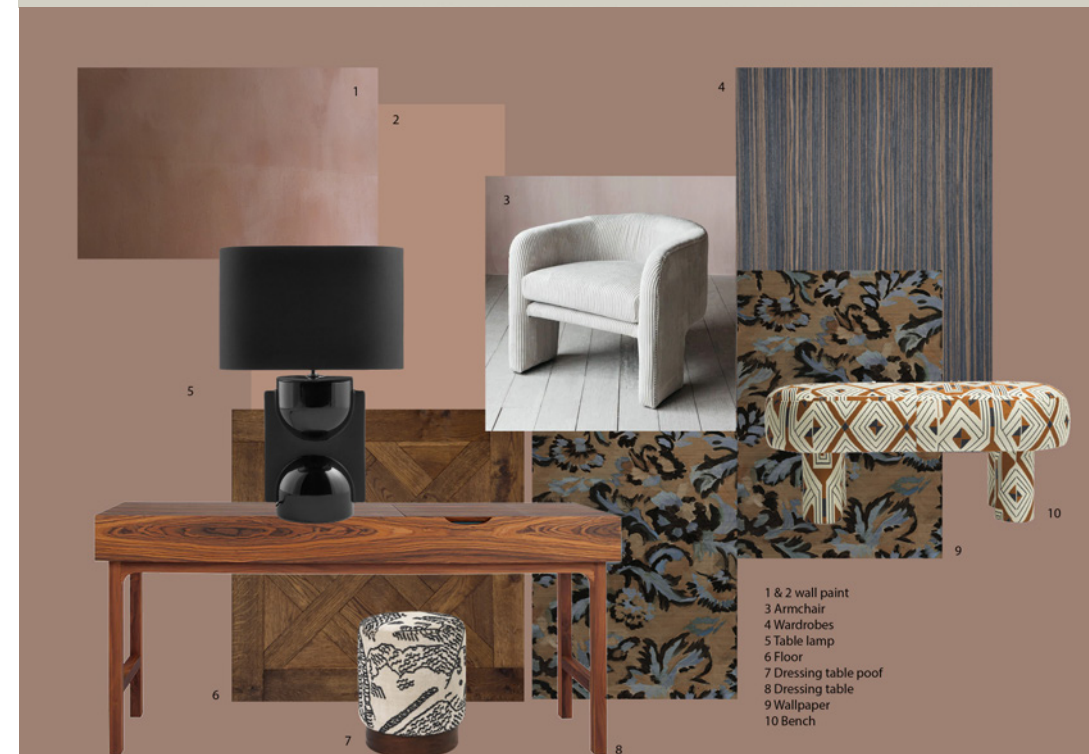
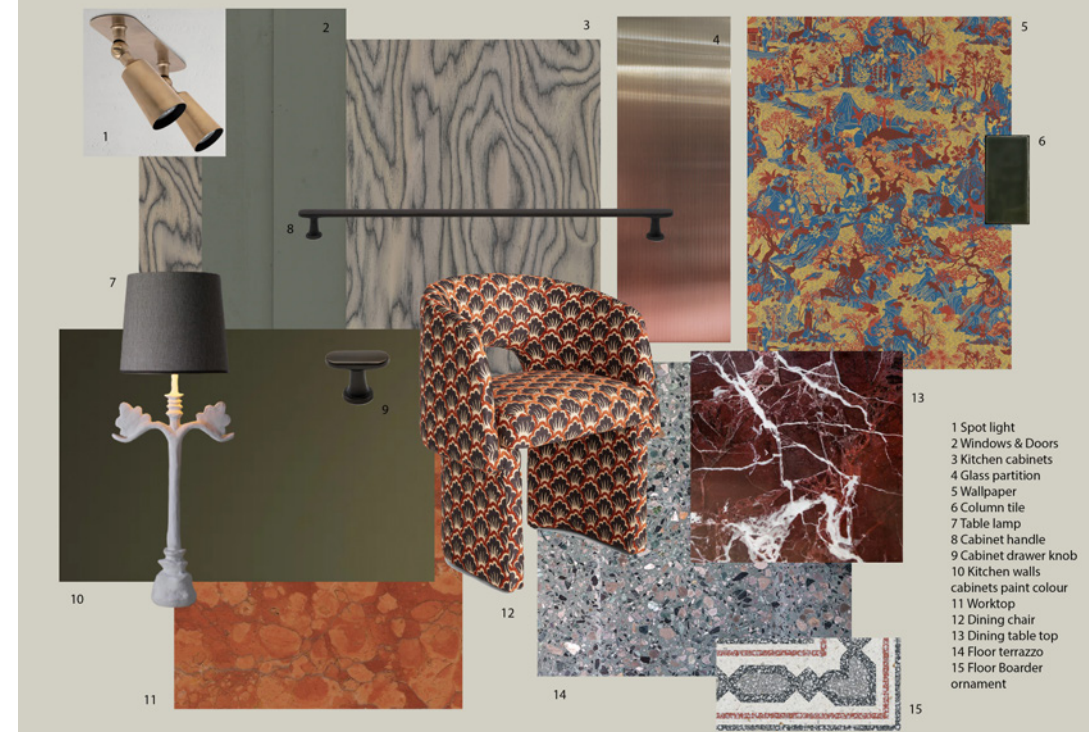


COLOUR PALLETTE

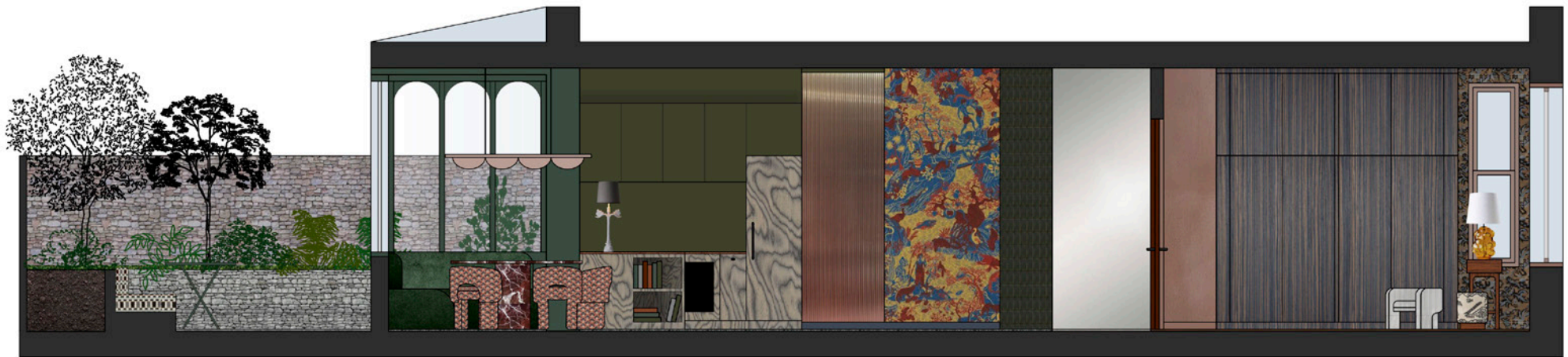




# Kitchen Dining and Bedroom Floor plan and sample boards



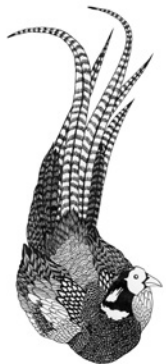
# New Floor plans & Long section elevation







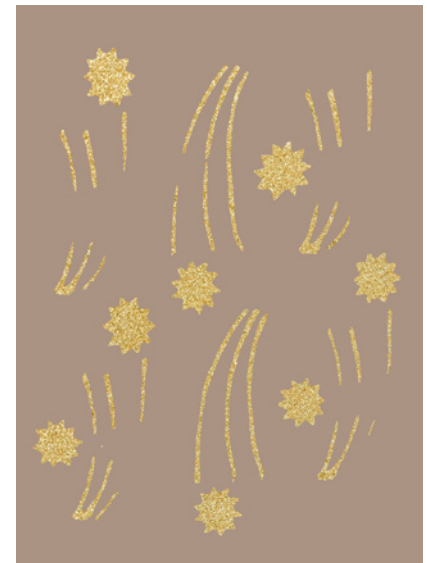
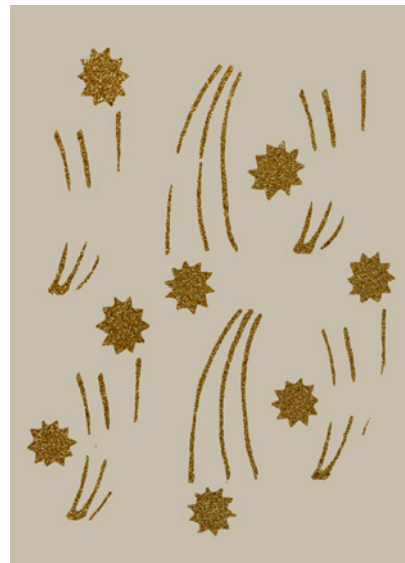
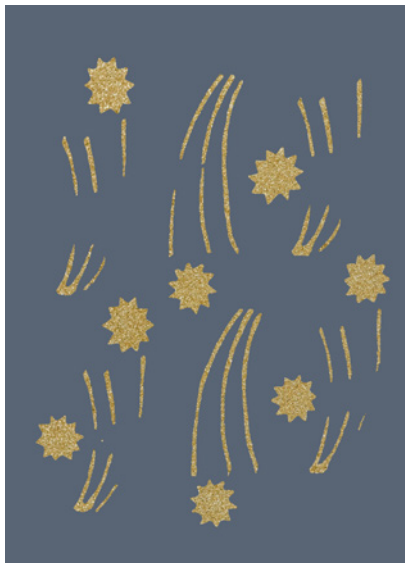
# Wallpaper Design



**“Pheasants and feathers”**  
*Wallpaper development for a  
design studio Vnutri.Design,  
Moscow, Russia*



# Pattern Design



*Pattern development for wallpaper design. From left to right: “Blue Thistle”, “Red Thistle”, “Damask”, “Harlequin”, “Shooting stars” (4 colourways).*





*“Fig tree” and “Daisy” Pattern development and examples of a wallpaper design*



# Art



“Ranunculus” Pastel on paper



“Icon I” Acrylic and 24Kt gold leaf on canvas



“Olapa” Acrylic and ink on paper



“Resting Force” (detail) Pastel on paper



“Eggshells” Pastel, acrylic, 24Kt gold leaf on paper